

Outer ventilation hood MVVM 162 Mounting from inside

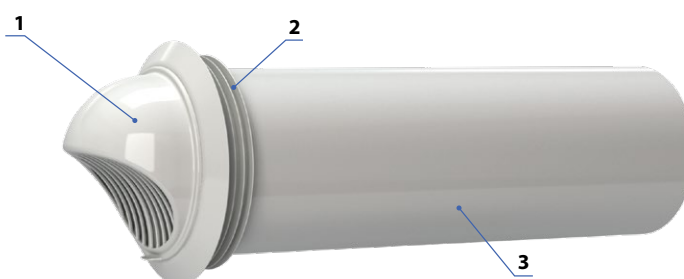


Application

- The outer hood is designed to prevent ingress of water and large objects into the ventilation equipment from outside.
- Pre-installed with a hood the air duct is mounted in a core hole drilled in the wall. The installation is done from inside.
- Special design allows installation of the hood by the operator on a wall of high-rise buildings and enables airtight sealing of the air duct in the core hole.

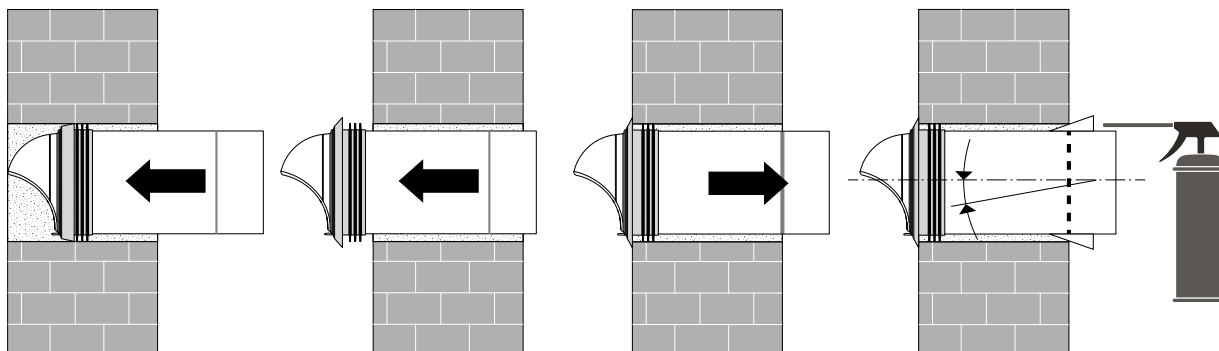
Design

- Made of high-quality incombustible ultraviolet resistant plastic.
- Fixation at the end of the air duct with latches.
- The air duct with diameter of 160 mm is made of high-quality PVC plastic.
- The ventilation hood [1] is equipped with a silicone sealing ring [2] that provides high sealing integrity of the air duct [3] in the core hole in the wall.

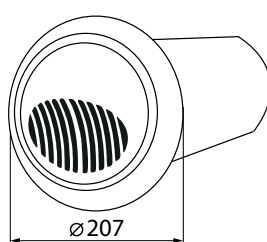
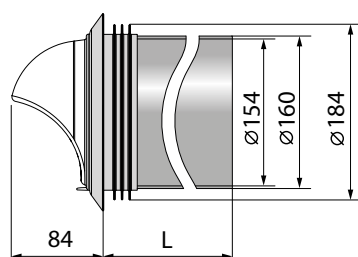


Mounting

- Drill a core hole with a diameter of 180 mm in the wall.
- Insert the hood into the wall core hole and push it until the sealing ring appears on the outer side.
- Pull the hood in the opposite direction so the silicone sealing ring provides tight seal between the hood and the wall.
- The air duct must be fixed in the wall core hole using mounting foam.



Overall dimensions



Model	L	Air pass, [m²]
	mm	
MVVM 162	-	0.0078
MVVM 162 03	300	
MVVM 162 05	500	
MVVM 162 07	700	
MVVM 162 08	800	